

15th Regional Meeting of the Society of Mining Professors

9-13 March 2026

Kalgoorlie, Western Australia



2nd Circular



Curtin University



01 The Society of Mining Professors

Mission of SOMP

The Society of Mining Professors/Societät der Bergbaukunde (SOMP) is a global community committed to advancing the education, science, and practice in mineral disciplines for the benefit of society and the sustainable future of our planet. SOMP's mission is to foster the exchange of knowledge, ideas, and best practices among educators and researchers who shape the next generations of mining professionals.

Through international collaboration, the Society inspires innovation in teaching and research that meets the challenges of the ever-evolving resources sector. SOMP serves as a vital bridge connecting academia with industry and society, ensuring that mining education remains future-focused, and driven by the standards of safety, ethics, and sustainability.

The Society upholds the belief that education is the catalyst for progress, igniting new ideas, empowering people, and driving positive change in the mining industry worldwide. By working together, we shape not only the engineers and scientists of tomorrow but also a resilient, responsible, and innovative mining sector that serves humanity for generations to come.



Regional Meetings

SOMP Regional Meetings embody the Society's commitment to bringing its global mission closer to local communities, industries, and universities globally. These events are not just conferences; they are opportunities for dialogue, collaboration, and knowledge exchange, tailored to address unique challenges and opportunities within each region's mining and resources sector.

SOMP Regional Meetings connect academics researchers, industry leaders, and students in the environments, where mining shapes economies and communities. They create spaces where ideas flow freely, partnerships are forged, and solutions are co-developed to ensure that mining education remains relevant, innovative, and responsive to local needs. These meetings strengthen networks, inspire young professionals, and showcase regional expertise while aligning with SOMP's global vision of responsible, sustainable, and future-ready mining.

Through regional engagements, SOMP empowers its members to champion best practices, promote excellence in teaching and research, and build capacity where it is needed most. In every location, a Regional Meeting leaves a legacy of stronger connections, new ideas, and renewed commitment to shaping the next generation of mining engineers and leaders who will responsibly steward our planet's mineral wealth.

INVITATION

Dear colleagues, friends,

Hosting the 15th SOMP Regional Meeting at the Western Australian School of Mines in Kalgoorlie is an honour that offers a unique chance to gather the world's leading mining educators and researchers at the beating heart of Australia's Goldfields, a region synonymous with mining heritage and resource innovation.

This meeting will offer SOMP members an unparalleled opportunity to engage directly with one of the world's most active mining hubs, where industry and academia work side by side to tackle real-world challenges and pioneer sustainable solutions.

The gathering will also attract emerging academics and institutions with fresh perspectives across the broader Indo-Pacific region, one of the fastest-growing, resource-rich, and strategically vital areas on the planet. The new SOMP members shall connect with a global network of academia leaders, gain insights into world-class education models, and ignite partnerships that turn local expertise to global impact.

In the heart of the Goldfields, delegates are not expected to just delegate, but to experience a mining town first-hand, surrounded by living examples of innovation, resilience, and community spirit. This is going to be more than a meeting; it can turn into a spark for a thriving Indo-Pacific research hub.

Hence, we are excited to welcome existing and new SOMP members, colleagues, and friends to the 15th Regional SOMP Meeting that will take place in **Kalgoorlie** on **March 9-13, 2026**.

Sincerely,

George Barakos

WASM
Curtin University

Sakshi Anderson

WASM
Curtin University

03 Hosting Institute: WA School of Mines



Nestled in the heart of Australia's iconic Goldfields, the Western Australian School of Mines is one of the world's most respected institutions for mining and resources education and research. For more than 120 years, it has stood where industry and academia meet, training generations of our mining leaders.

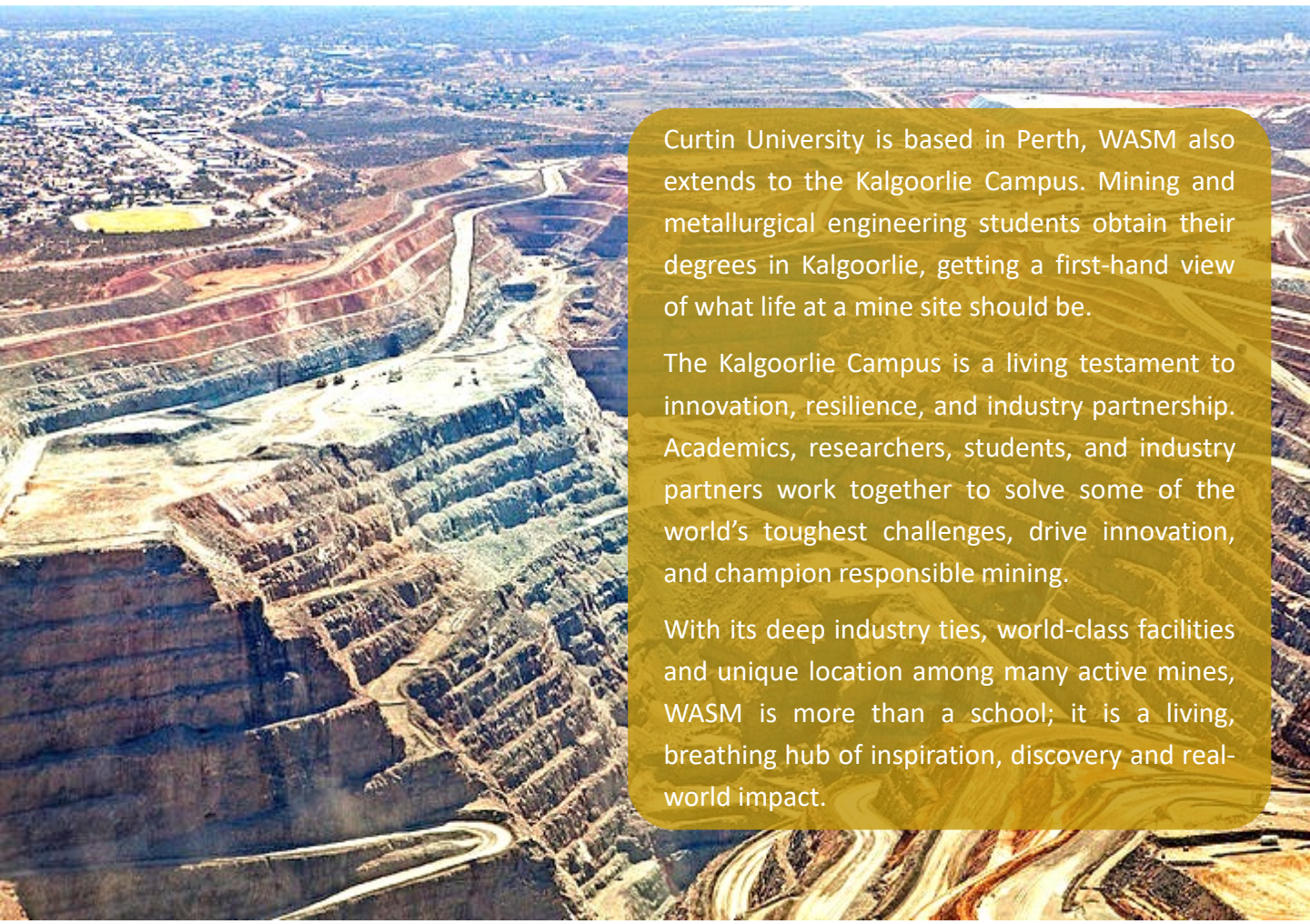
The WA School of Mines has a rich history deeply connected to Kalgoorlie's gold rush and the development of the local metal mining industry. Initially established in Coolgardie (a town nearby) in 1902, it quickly relocated to Kalgoorlie (1903) due to the area's vast gold discoveries and influx of people. In 1969, WASM joined the WA Institute of Technology (WAIT), which was renamed to Curtin University of Technology in 1987, before shortening it to Curtin University in 2010.



Curtin University is based in Perth, WASM also extends to the Kalgoorlie Campus. Mining and metallurgical engineering students obtain their degrees in Kalgoorlie, getting a first-hand view of what life at a mine site should be.

The Kalgoorlie Campus is a living testament to innovation, resilience, and industry partnership. Academics, researchers, students, and industry partners work together to solve some of the world's toughest challenges, drive innovation, and champion responsible mining.

With its deep industry ties, world-class facilities and unique location among many active mines, WASM is more than a school; it is a living, breathing hub of inspiration, discovery and real-world impact.



04 Key Dates & Registrations



The 15th SOMP Regional Meeting will take place from March 9-13, 2026. The agenda will include:

- ☐ optional mine site visits (March 9-10),
- ☐ an interactive workshop with industry stakeholders (March 11),
- ☐ a two-day conference that will frame the main event (March 12-13).

SAT March 07	SUN March 08	MON March 09	TUE March 10	WED March 11	THU March 12	FRI March 13	SAT March 14
Arrive in Western Australia		Mine site visits	Mine site visits	Industry Workshop	15 th SOMP Regional Meeting		Departures / Further stays
	Arrive in Kalgoorlie			Sundowner	Official Dinner	Farewell party	

Registrations are now open:

We encourage you to register as soon as possible until **March 6, 2026**. Our goal is to offer low registration fees for all delegates and deep discounts for those coming from low- and middle-income nations ([OECD definition](#)). All prices are in AUD. To register, please click on the follow link:

<https://somp2026regional.com/registration/>

Registration	Fees
Regular SOMP Members	A\$500
Regular Academic & Industry Participants	A\$500
Participants (SOMP Members or not) from emerging countries or regions (OECD definition)	A\$250
Junior SOMP Members	A\$250
HDR/PhD students (SOMP Members or not) from emerging countries or regions (OECD definition)	A\$250
Optional field trip on Monday March 9, 2026 (including lunch, snacks, and transportation)	A\$150
Optional field trip on Tuesday March 10, 2026 (including lunch, snacks, and transportation)	A\$150

- ☐ For attending only the Industry Workshop on March 11, 2026, please contact us via email.
- ☐ For spouses program please contact us via email

05 Draft Program



Monday 09.03.2026 (Optional Field Trip 1)	
Time	Activity
08:00-09:00	Pick up from hotels and drive to 1 st site
09:00-11:30	1 st site visit to underground gold mine (TBC)
11:30-12:30	Drive back to Kalgoorlie
12:30-14:00	Lunch Break
14:00-15:00	Drive to 2 nd site
15:00-17:00	2 nd site visit to processing plant (TBC)
17:00-18:00	Drive back to hotels
18:00-21:00	Leisure time and dinner (self-arranged)
Tuesday 10.03.2026 (Optional Field Trip 2)	
08:30-09:00	Pick up from hotels and meet at WASM main entrance
09:00-11:30	3 rd site visit to Super pit surface gold mine (TBC)
11:30-12:00	Drive back to WASM
12:00-13:30	Lunch Break
13:30-14:00	Drive to Hannans North Tourist Mine
14:00-15:00	Visit to Hannans North Tourist Mine (TBC)
15:00-15:30	Drive back to hotels
15:30-17:30	Leisure time
17:30-19:30	Public lecture on mine safety (TBC)
19:30-21:30	Dinner and drinks (self-arranged)
Wednesday 11.03.2026 (Industry Workshop)	
08:30-09:00	Official Opening of Industry Workshop/Welcome ceremony
09:00-09:45	Mining overview in the Goldfields <i>Industry presentations to address mining projects around Kalgoorlie and their current developments</i>
09:45-10:45	Academia and industry collaboration in education <i>Invited talks from academics (SOMP, WASM, other universities), industry & government stakeholders, and from other organisations</i>
10:45-11:15	Coffee break
11:15-12:15	Academia and industry collaboration in research <i>Invited talks from academics (SOMP, WASM, other universities), industry & government stakeholders, and from other organisations</i>
12:15-13:30	Lunch Break
13:30-14:30	“Forest of Mineral Resources” <i>Researchers’ interactions, discussions, matchmaking and Poster Walk</i>
14:30-15:00	Coffee break
15:00-16:30	Interactive workshop to find collaboration opportunities & bottlenecks between academia, industry, government, communities, Indigenous People and other relevant stakeholders
16:30-17:30	Drinks at Social Club (student’s pub)
17:30-18:15	Leisure time
18:15-18:30	Bus transfer to evening event
18:30-21:00	Industry Sundowner (TBC)
21:00-21:30	Bus transfer to hotels

06 Draft Program (Cont.)



Thursday 12.03.2026 (SOMP Regional Meeting Day 1)	
Time	Activity
08:30-09:00	Official Opening of SOMP Regional Meeting/Welcome ceremony <ul style="list-style-type: none"> • Curtin University • WASM • Kalgoorlie City
09:00-10:00	Presentation of the Society of Mining Professors (SOMP) <i>SOMP President: Prof. Emily Sarver</i> Structure of the Society & Members' Benefits <i>SOMP Committees Representatives</i>
10:00-10:30	Coffee break
10:30-12:00	Presentations from countries' representatives in the Indo-Pacific region discussing their education & research status, challenges, innovations. Connection opportunities to SOMP global network
12:00-12:30	Engaged Student Learning Challenges and Strategies <i>WASM, Curtin University</i>
12:30-13:30	Lunch Break
13:30-15:00	"Forest of Mineral Resources" <i>Researchers' interactions, discussions, matchmaking and Poster Walk</i>
15:00-16:00	Kalgoorlie Campus Tour, Laboratories Visit & Group Photo
16:00-18:00	Leisure time
18:00-20:30	Official Dinner (TBC)
Friday 13.03.2026 (SOMP Regional Meeting Day 2)	
09:00-10:15	Collection of research presentations: <ul style="list-style-type: none"> • Modern mining • Small scale & Artisanal mining • Post mining • Critical minerals' era
10:15-10:30	Coffee break
10:30-12:00	"Wheel of Academia" <i>Interactive workshop to prioritise research & education areas for potential collaborations, map synergies, identify bottlenecks and risks</i>
12:00-12:30	Closing remarks Fairwell ceremony
12:30-14:00	Lunch Break
End of program	

07 Venue: Kalgoorlie Campus



The 15th SOMP Regional Meeting will be held at the WMC, an auditorium with a capacity of 300 people, that also serves as a classroom and venue for conferences in the Kalgoorlie Campus.



Some of the social events like the welcoming sundowner and the farewell party will take place at the premises of the campus.

The Social Club is a facility that is run entirely by the WASM students and is next to the meeting venue.



08 Mine Site Visits



An optional two-day package for mine site visits will be offered before the regular activities of the meeting. There are several surface and underground mining operations near Kalgoorlie, (mostly gold production, followed by lithium and nickel production among other minerals).

Kalgoorlie is also home to one of the largest open pit mines on Earth and the biggest gold mine in Australia, the Fimiston Mine (mostly known as the Super Pit) that is approximately 3.7 km long, 1.5 km wide and 660 m deep.

The selection of mine sites for visit and related information will be announced in due time.



Northern Star, 2025

Evolution Mining, 2025

09 Culture & Leisure Activities



Kalgoorlie offers a variety of cultural activities, including exploring historical sites, enjoying local arts and crafts, and experiencing Indigenous cultural tours.

You can delve into the region's gold rush history and social life through the exhibits and artifacts at the Museum of the Goldfields

<https://visit.museum.wa.gov.au/goldfields>

A visit to Hannans North Tourist Mine will give you a unique chance to view a historic mine site, learn about gold mining operations, and see what it was like to live in the 1800's in the Goldfields. At the end you can board a real 300-tonne dump truck!

<https://www.hannansnorth.com.au/>

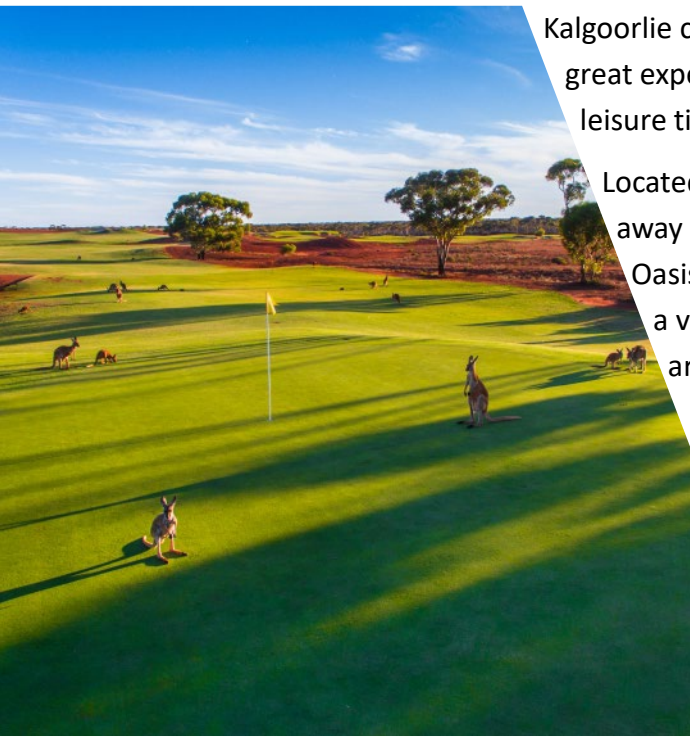


Kalgoorlie can also offer great experiences during leisure time.

Located only 10 minutes away by car the Goldfields Oasis Recreation Centre is a vast sports and aquatic area for the whole family.

In addition, the city hosts a premier, 18-hole grass golf course, where you can see Kangaroos that tend to show up especially around the sunset.

kalgoorliegolfcourse.com



10 Travel Information - Getting Here



Kalgoorlie is located approximately 600 km (372 miles) northeast of Perth, in the state of Western Australia. You can fly to Perth International Airport (PER). Several major airlines connect Perth Airport to destinations around the world. Qantas, Virgin Australia, Singapore Airlines, Cathay Pacific, Malaysia Airlines, Scoot, Qatar Airways, and Emirates are among the prominent airlines operating at Perth Airport.

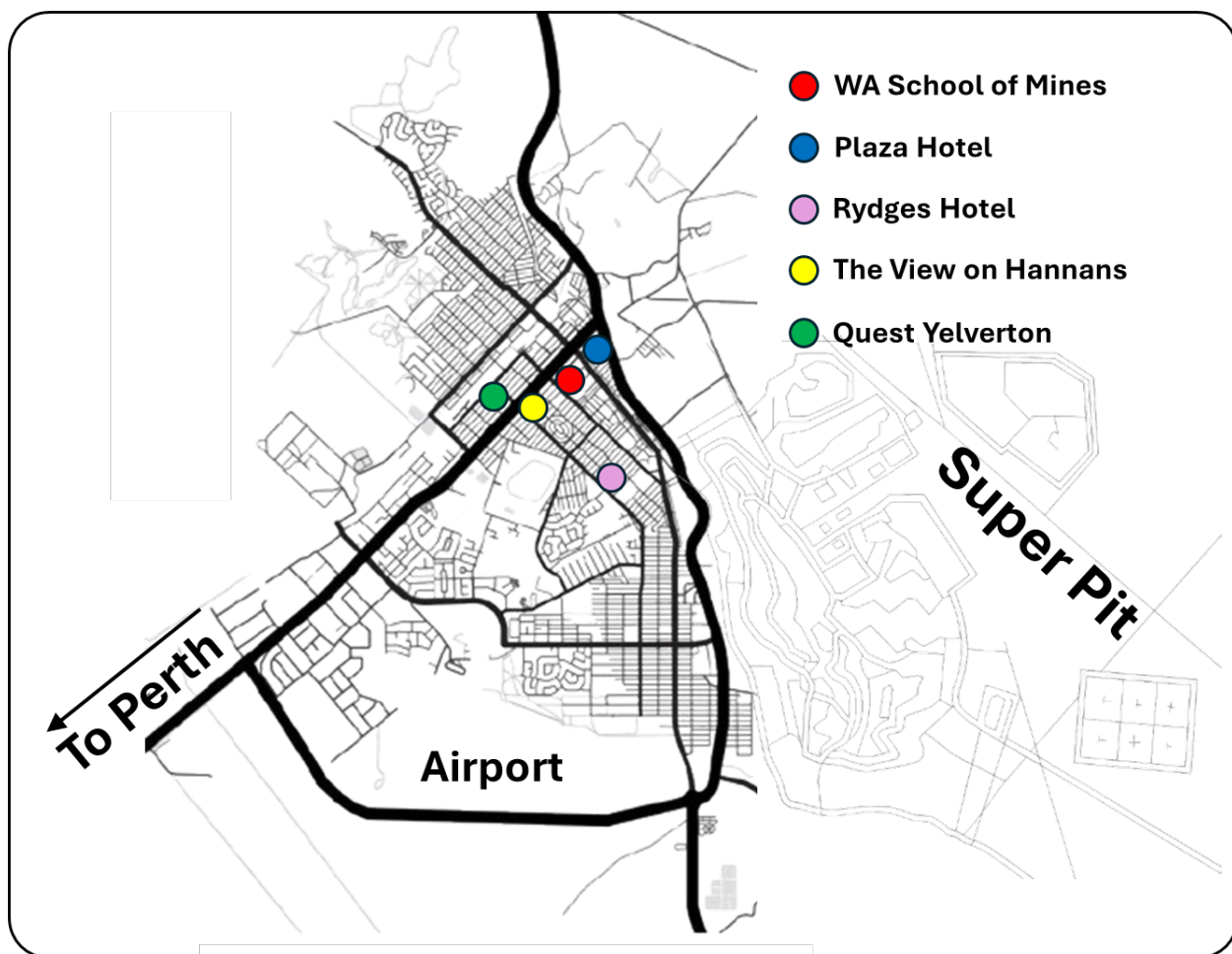


Kalgoorlie is connected to Perth by air, train or car. In weekdays there are total eight flights from Perth to Kalgoorlie operated by Qantas and Virgin Australia. During weekends there are only four flights, two on Saturday morning and two on Sunday afternoon. The flight duration is one (1) hour. Hence, delegates that will be traveling to Kalgoorlie on Sunday afternoon need to consider this restriction when booking their international flights. An overnight stay in Perth (Saturday March 7) is a convenient solution.

There is also a train connection to Kalgoorlie. The trip takes approximately seven (7) hours and is operated by Transwa (www.transwa.wa.gov.au/). Alternatively, you can rent a car and drive to Perth via the Great Eastern Highway (600 km – 6-7 hours of driving).

11 Accommodation

Kalgoorlie offers a range of accommodation options. There are hotels in very close proximity to the venue and others in a distance of a few minutes with car. The organising committee will arrange special hotel room rates for the attendees, which will be announced in due time.



The Plaza Hotel Kalgoorlie

Plaza offers a bar, restaurant and swimming pool. All rooms feature a TV, refrigerator and a private balcony. The venue is 450m away (5 min walking).

www.plazakalgoorlie.com.au/

Rydges Kalgoorlie

Rydges is a luxury resort with studios and 1- and 2-bedroom apartments. Facilities include outdoor and indoor swimming pools, spa, a restaurant and a bar. The venue is 2.1km away (3 min by car).

www.rydges.com/accommodation/regional-wa/kalgoorlie/

Quest Yelverton Kalgoorlie

In Quest Yelverton, the air-conditioned rooms include a refrigerator, microwave, electric kettle, stove and dining area. Some rooms offer a private spa bath and sauna. The venue is 650m away (7 min walking). www.questapartments.com.au/

The View On Hannans Kalgoorlie

View On Hannans offers rooms and apartments that include air conditioning, high-speed internet, access to a laundry, and BBQ area. The venue is 1.1km away (2 min by car/14 min walking).

www.theviewonhannans.com.au/

12 Other Useful Information



Climate & Dress Code

In March, Kalgoorlie experiences warm days and cool nights, with average highs around 29°C (84°F) and lows around 16°C (61°F). The weather is generally dry, with an average of 5 rainfall days and 10mm of rainfall for the month. March offers plenty of sunshine, with an average of 10 hours of sunshine per day. Sunscreen, a hat, and sunglasses are highly recommended to protect from the strong Australian sun.

The customary dress code for SOMP events is business casual, giving attendees the flexibility to interpret it in their own way while maintaining a professional appearance. Otherwise, for daytime leisure activities, light and breathable clothing is ideal for the warm days.

For any specific requirements regarding field trips or outdoor activities, the organising committee will provide further information in advance to ensure delegates are well-prepared.

Spouses & Accompanying Persons Program

Persons accompanying SOMP delegates will have their own program to explore Kalgoorlie and the surrounding area. At this early stage we are trying to arrange a variety of activities such as walking tours to experience Kalgoorlie Aboriginal Culture, a Tram tour around the city to view many of the attractions, and a visit to the Coolgardie's Camel Farm among other. More information can be found in the official webpage: www.kalgoorlietourism.com. The activities will depend on the number of participants in this Program.

Visa Information

All visitors to Australia must have a valid visa to travel to and enter Australia (other than New Zealand passport holders who will normally be granted a Special Category visa on arrival, provided they meet health and character requirements; and permanent residents of Norfolk Island who may be granted a Permanent Resident of Norfolk Island visa on arrival).

There are many visa options available for visiting Australia. The appropriate visa will depend, amongst other things, on your nationality. We have created a detailed useful guide for the delegates in the following link: <https://somp2026regional.com/visa-information/>.

Delegates should apply for their visa well in advance of the conference dates. It is strongly recommended that travellers apply at least two months prior to their intended date of departure. The organising committee can provide **invitation letters** upon request.

13 Organising Committees



Regional Organising Committee

Dr. George Barakos (WASM, Curtin University, Co-Chairperson)
Dr. Sakshi Anderson (WASM, Curtin University, Co-Chairperson)
Assoc. Prof. Bogale Tadesse (WASM, Curtin University)
Assoc. Prof. Richard Alorro (WASM, Curtin University)
Assoc. Prof. Boris Albijanac (WASM, Curtin University)
Assoc. Prof. Agus Saptoro (WASM, Curtin University)
Dr. Ping Chang (WASM, Curtin University)
Dr Sheila Devasahayam (WASM, Curtin University)
Dr. Roohollah Shirani Faradonbeh (WASM, Curtin University)
Dr. Ali Sepheri (WASM, Curtin University)
Dr. Sela Akdag (WASM, Curtin University)
Dr Jonah Gamutan (WASM, Curtin University)
Ms Sandra Nowosad (WASM, Curtin University)
Ms Tanya Chambers (WASM, Curtin University, Director of Kalgoorlie Campus)

International Scientific Committee

Dr. George Barakos (WASM, Curtin University, Co-Chairperson)
Dr. Sakshi Anderson (WASM, Curtin University, Co-Chairperson)
Prof. Erkan Topal (WASM, Curtin University)
Prof. Waqar Asad (WASM, Curtin University)
Assoc. Prof. Laurence Dyer (WASM, Curtin University)
Prof. Emily Sarver (Virginia Tech, USA)
Prof. Serkan Saydam, UNSW, Australia
Prof Godfrey Dzinomwa, Namibia University of Science and Technology, Namibia
Prof. Harmony Musiyarira, Namibia University of Science and Technology
Prof. Jürgen Kretschmann, Hainan Bielefeld University of Applied Sciences
Prof. Domingo Javier Carvajal Gomez, University of Huelva, Spain
Prof. Helmut Mischo, TU Bergakademie Freiberg, Germany
Honorary Prof. Angel Tobar, Universidad Politécnica de Madrid, Spain
Dr. Nga Nguyen, Hanoi University of Mining and Geology, Vietnam
Dr. Sureka Thiruchittampalam, University of Moratuwa, Sri Lanka
Ms Sandra Nowosad (WASM, Curtin University)

14 Contact Information



Please direct inquiries to our team at:

somp2026regional@curtin.edu.au

Or visit the website:

<https://somp2026regional.com/>

