



NAMIBIA UNIVERSITY
OF SCIENCE AND TECHNOLOGY

**Faculty of Engineering and the Built
Environment**

Society of Mining Professors/ Societät der Bergbaukunde 32nd SOMP Annual Meeting and Conference Circular

Dates: 08-14 September 2022

Venue: Windhoek Country Club Resort, Windhoek, Namibia



Table of Contents

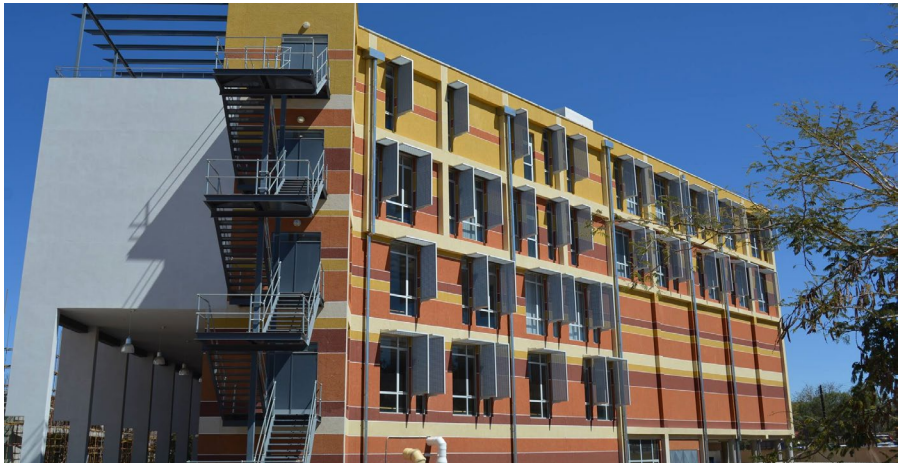
1. Message from the President	3
2. Venue Information	6
3. Final Programme	7
4. Climate and Dress Code	8
5. Presentation of Society Awards	8
6. Registration and Payment	8
7. Visa Information	11
8. Airport and Taxi Services	11
9. Contact Information	12
10. Organizing Committees	12
11. Venue Contact and Location	13
12. Why Attend?	14
 Appendix 1: Pre-Conference Programme.....	 16
Appendix 2: Conference Programme.....	17
Appendix 3: Partners Programme.....	23
Appendix 4: Post-Conference Tour.....	24



1. Message from the President

Dear SOMP Members

It is a great honour, that I hereby extend this invitation to you, dear esteemed members, to the 32nd Society of Mining Professors Annual Meeting and Conference to be co-hosted by the Namibia University of Science and Technology (NUST) and the Southern African Institute of Mining and Metallurgy (SAIMM) at the **Windhoek Country Club Resort, Windhoek, Namibia, from 8–14 September 2022**. The Annual Meeting and Conference are being organised under the stewardship of a capable local and international organising committee that I am confident will deliver the task at hand with their usual mark of diligence. Namibia University of Science and Technology (NUST) is honoured to collaborate with Southern African Institute of Mining and Metallurgy (SAIMM) and Society of Mining Professors (SOMP) to host the conference and annual meeting.



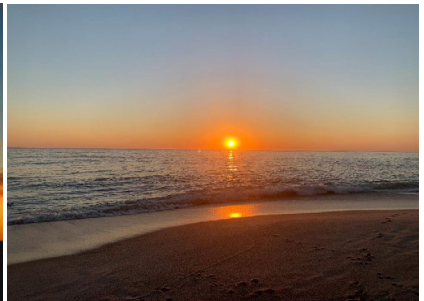
As per norm, this will provide a platform for engagement and interaction amongst our members as well as stakeholders. On behalf of SOMP, allow me to extend an invitation to all our stakeholders and once again reiterate that the advancement of minerals education is a collective effort that requires consistent engagement with our stakeholders. I am hopeful that the thematic areas of member and capacity development, future trajectory of minerals education and collaborative research will receive usual attention. Equally, we look forward to robust technical content and engagement.

Namibia is a country with a rich history and heritage, abundantly endowed with rich wildlife and cultural diversity. The typical African sun is a great attraction to tourists from across the globe, who flock to Namibia through the course of the entire year in search of African warmth and experiences. It is indeed a great country, with the rare occurrence of the great South Atlantic Ocean meeting the vast Namib Desert, the oldest desert known to mankind, dating back at least 55 million years. From bird watchers to natural scenery enthusiasts visiting the Fish River Canyon, the country offers diverse yet unique opportunities to the keen traveller wishing to blend business travel with memorable visits. It is a vast country with a relatively low population, offering a low population density. This offers the daring traveller lengthy stretches of quiet and peaceful drives from the extreme terrain of Kaokoland to the seemingly endless tracts of Damaraland.

I also wish to extend my invitation to the spouses and partners who will travel from around the globe to be part of this landmark conference together with the delegates. A separate partners programme will be available for the spouses and partners of the delegates.

For a more detailed outline of the programme for the conference and the accompanying persons, please refer to the programme contained herein.







I look forward to a great conference and meeting. I also wish to urge you to explore the unique opportunity to experience our wonderful Namibian hospitality and country during your stay.

We invite you to register from now on for the conference, technical visits and the accompanying persons program. We recommend that you book your accommodation well ahead of time; the demand for hotel rooms in the summer season is very high. However, the hotels mentioned in this document will have a special rate for the conference attendees.

The entry requirement into Namibia by foreign travellers of vaccination license and a negative PCR test result has been scrapped. This means that visitors to Namibia are no longer required to produce proof of their vaccination or negative PCR test results.

2. Venue Information

The Windhoek Country Club Resort offers businessmen, conference delegates, and families the best of both worlds.

The resort has ensured that it remains the final word in comfort and entertainment in Namibia.

It offers the delegates an opportunity to enjoy a rendezvous with Lady Luck at the Desert Jewel Casino, play a round of golf on the world class 18-hole golf course, relax in the lazy river or take a tour of any one of Windhoek's cultural sites.



3. Final Programme

The program of our Annual General Meeting will follow a participatory and interdisciplinary approach through the following activities:

Pre-Conference Tour (Appendix 1)

Technical tour

The technical tour is being scheduled to an underground gold mine [B2Gold] about 300 km away from Windhoek. The tour is scheduled to start on 8 September 2022 until 9 September 2022. The cost for the Pre-Conference Mine Tour is US\$80. We will stay overnight at the Otjikoto Gold mine camping site. Bring along closed shoes and sunny hat and sun cream as well.

Conference Programme (Appendix 2)

The conference programme will consist of keynote speakers from the mining industry as well as the Chamber of Mines of Namibia. The Minister of Mines and Energy, Hon. Tom Alweendo is also scheduled to speak during the main conference. Intermittent breaks of a variety of music and dance will bring an atmosphere of fun and relaxation for the delegates while papers in the core sessions under the various themes will be presented.

Accompanying Persons Programme (Appendix 3)

Accompanying persons will be provided a game drive, museum, city tours- Research Habitat Center and Penduka Women Project in Katutura, Namibia Diamond Trading Company, Walking tour through Windhoek City Centre (Tintenpalast, ChristusErloser-Church, Independence Memorial, Meteorite Fountain, Craft Center). In addition, the spouses and partners are invited to the Conference social activities such as welcome reception/cocktail, conference and awards dinners.

Post-Conference Tour (Appendix 4)

The post-conference tour includes a drive into the beautiful coastal town of Swakopmund with a close touch to nature. Swakopmund and Walvis Bay are notable coastal towns where the dunes meet the ocean. Namibia has significant uranium reserves capable of providing 10% of global uranium output. Husab mine

is one of the two active uranium mines that will be visited. A visit to this flagship operations will expose delegates to world-class open pit mining. Visits to the Orano Desalination plant, Namibia Uranium institute, and the Krystal gallery will be facilitated. The tour will also some desert adventure activities [camel riding, go-carting, and sand dune among other activities].

4. Climate and Dress Code

Temperatures in early September in Windhoek range from 28 to 36 degrees Celsius. Meeting rooms are air-conditioned. The recommended conference attire is business casual. Formal dress code will be appreciated for the 13 September Awards dinner.

5. Presentation of Society Awards

SOMP awards and recognitions will be presented during the meeting. For this year, only the Tim Shaw, Michael Karmis, and the Emeritus Awards will be recognised

6. Registration and Payment

The conference attendee registration fee is rated into three categories by the level of certainty in terms of payment time:

❖ 30 July 2022: Normal registration	US\$ 700
❖ Author Registration (For delegates presenting papers and posters)	US\$ 600
❖ SOMP and SDIMI Registration (For delegates who wish to attend both conferences)	US\$ 960
❖ Retired/Emeritus SOMP Members	US\$ 480
❖ Regional Academics	US\$ 480
❖ SOMP Students Members	US\$ 480

The fee includes a conference kit, access to technical sessions, welcome reception, an Awards dinner, three lunches, and coffee and tea breaks.



Young professionals and PhD students are eligible for a discount of 50% off the relevant category with a full registration status.

Online Conference fees

❖ 30 April 2022: Early bird registration	US\$ 330
❖ 30 July 2022: Normal registration	US\$ 360
❖ Author Registration	US\$ 270
❖ SOMP and SDIMI Registration	US\$ 480
❖ Retired/Emeritus SOMP Members	US\$ 480
❖ Regional Academics	US\$ 240
❖ SOMP Students Members	US\$ 240

Accompanying Person Registration Fee

The fee rate for registered accompanying persons is US\$ 250.00, including welcome reception, awards dinner, three lunches and three guided tours.

Taxes and Fees

All rates of registration fee are Namibian taxes inclusive but bank transaction or other payment fees on the registrant side exclusive.

Accommodation

Accommodation will be provided at the venue of Windhoek Country Club Resort, an international standard 4+ star hotel, whose information is shown in the Venue Contact and Location section.

Rooms have been reserved at the venue hotel with a discounted rate of N\$1200 Namibian Dollar [equivalent to approximately USD 90/120] for single/double Superior room, including breakfast and taxes, until 18 September 2022. You may contact Thusnelda through email windhoek@legacyhotels.co.za to get a preferential rate for the conference

You may choose to stay in other facilities at your own discretion. Less expensive alternative hotels in the vicinity of the Conference venue include:

❖ Avani Windhoek Hotel & Casino

Website: <https://www.avanihotels.com/en/windhoek>

Booking Link for Conference Delegates:

NUST



❖ **Arrebusch Travel Lodge**

Website: <https://www.arebbusch.com/>

Booking Link for Conference Delegates:

32ND SOMP Annual Meeting and Conference held by NUST and SAIMM

PromoCode: SOMP32

❖ **NUST Hotel School**

e-mail: hotelschool@nust.na with reference to the 32nd SOMP Annual Meeting and Conference.

❖ **Hilton Windhoek Hotel**

Website: <https://www.hilton.com/en/hotels/>

Booking Link for Conference Delegates:

e-mail: WDHHI_Reservations@hilton.com with reference to the 32nd SOMP Annual Meeting and Conference.

❖ **Windhoek Country Club**

You may contact Thusnelda through email windhoek@legacyhotels.co.za to get a preferential rate for the conference

❖ **Windhoek Palm Hotel**

Website: <http://wph.com.na/>

Booking Link for Conference Delegates:

e-mail: reservations@wph.com.na with reference to the 32nd SOMP Annual Meeting and Conference.

Special discounts for the conference delegates have been negotiated with the above listed establishments.



7. Visa Information

You may be required to secure a Namibian visa and other documents for traveling to Namibia. The organizing committee of the 32nd SOMP Annual Meeting & Conference will offer invitation letters to the participants that need to apply for a visa to be able to travel to Namibia. To find out whether you require a visa, please follow the link: <https://namibiaembassyusa.org/foreign-nationals/>

For general information on Namibian visa and please contact your local Namibian embassy/consulate for details which are specifically applicable to you.

You may send the conference contact an email including your complete address and other eligible information to request an invitation letter for assisting your Namibian visa application.

8. Airport and Taxi Services

Hosea Kutako International Airport (HKIA) is about 40 km from Windhoek City. It is a 45-minute drive in non-rush hour traffic, though it usually takes about an hour to travel by taxi at a fare of US\$20 to US\$25. Shuttle from Hosea Kutako International Airport (HKIA) to preferred place of accommodation can be arranged through the following service providers:

❖ **City Cab**

E-mail: info@whk-citycab.com

Web: <http://www.whk-citycab.com/>

❖ **Dial-a-Cab**

Cell: +264 811 270 557

E-mail: reservations@dialacab.com.na

Web: <https://www.dialacab.com.na/>

❖ **Windhoek Airport Transfers**

Tel: +264 61 258 792 / +264 81 257 8601 / +264 81 245 0081

E-mail: transfers@namibiatours.com.na

Web: <http://www.namibiatours.com.na/>

9. Contact Information

Conference Chairperson: Prof Harmony Musiyarira
President Society of Mining Professors
Namibia University of Science and Technology
E-mail: hmusiyarira@nust.na
Mobile: +264 81 660 9220
web: www.nust.na

Conference Secretariat

Camielah Jardine,
Head of Conferencing
E-mail: camielah@saimm.co.za
Tel: +27 11 834-1273/7
Web: www.saimm.co.za

10. Organizing Committees

Local Organising Committee

- ❖ Prof Harmony Musiyarira
- ❖ Prof Godfrey Dzinomwa
- ❖ Prof Benjamin Mapani
- ❖ Mr Bernard Sililo
- ❖ Mr Privilege Shava
- ❖ Ms Adeltraud Mughongora
- ❖ Ms Martha Amwaama
- ❖ Mr Himeezembi Hengari
- ❖ Ms Kemi Jegede
- ❖ Mr Ruben Mwalwange
- ❖ Dr Valentine Katte
- ❖ Dr Absai Vatuva



International Organising Committee

- ❖ Prof. Harmony Musiyarira, *Namibia University of Science and Technology*
- ❖ Prof. Vlad Kecojevic, *West Virginia University*
- ❖ Prof. Zach Agioutantis, *University of Kentucky*
- ❖ Prof. Michael Karmis, *Virginia Tech*
- ❖ Assoc. Prof. Emily Sarver, *Virginia Tech*
- ❖ Prof. Bruce Hebblewhite, *University of New South Wales*
- ❖ Prof. Serkan Saydam, *University of New South Wales*
- ❖ Prof. Zhongxue Li, *University of Science & Technology Beijing*
- ❖ Prof. Oscar Restrepo Baena, *Universidad Nacional de Colombia*
- ❖ Prof. Ronny Webber-Youngman, *University of Pretoria*
- ❖ Dr. Rudrajit Mitra, *RWTH Aachen University*
- ❖ Prof. Domingo Carvajal, *University of Huelva*
- ❖ Assoc. Prof. Nga Nguyen, *Hanoi University of Mining and Geology*
- ❖ Assoc. Prof. Andrea Brickey, *South Dakota School of Mines*
- ❖ Prof. Elisabeth Clausen, *RWTH Aachen University*
- ❖ Prof. Oliver Langefeld, *Clausthal University*

11. Venue Contact and Location

Windhoek Country Club Resort is located on B1 Western Bypass in Windhoek South. The resort can be directly contacted on + 264 (0) 61 205 5911 by telephone or windhoek@legacyhotels.com by e-mail.

12. Why Attend?

This will be the second time the SOMP conference will be held in Africa. Namibia, a country with vast mineral resources and a vibrant economy, has been chosen to host SOMP because it offers the opportunity to examine and discuss a range of critical issues facing the extractive sector, including mining in environmentally sensitive areas, water and energy scarcity, active artisanal and small-scale mining, the need for capacity building, fair trade practices and opportunities for value-added production.

Learn

The conference will feature presentations from experts and practitioners on advances in social, economic, and environmental sustainability, and related technical issues relevant to the Namibian and African mining sector and other areas around the world.

Meet people

This conference brings together people interested in mining in Namibia and Africa, including governments representatives, the mining industry, academia, NGOs, and civil society. Opportunities for networking and discussion will be provided. A number of international attendees are also expected, so more networking opportunities will be available

World-class mining operations

Namibia has an extensive and diverse mineral endowment, is the source of the richest alluvial diamond deposits globally, and is a world leader in marine diamond mining. Namibia has significant uranium mines capable of providing 10% of global mining output.

Professional Development

Attend world-class presentations and mine tours to gain professional development points.

Enhance your knowledge

Hear from world-renowned speakers and top industry leaders coupled with networking with conference delegates.

Experience Namibia

Namibia is home to the world's oldest desert and has the highest dunes in the world. Environment protection is enshrined in the constitution, and more than 40 percent of the country is under conservation management. Delegates will have an opportunity to experience the warm hospitality of the Namibian people and their cultural activities. Namibia is home to some of Africa's most spectacular natural sights. The Southern part of Namibia (//Karas region) hosts the Fisher River canyon, the second largest canyon after the Grand Canyon in the USA, and spectacular Sossusvlei scenery of rust-red sand dunes set against white pans. There will be opportunities to visit some operating mines and unique game parks home to a diversity of wildlife, including the big five. Swakopmund, Walvis Bay, and Lüderitz are notable coastal towns where the dunes meet the ocean.



APPENDIX 1:

Pre-Conference Programme

Wednesday, 7 September 2022

Delegates arrive in Windhoek Check-in

Thursday, 8 September 2022

10:00-13:00	Drive to Otjiwarongo from Windhoek
13:00-13:30	COVID-19 Tests and security checks
13:30-14:30	Lunch
14:30-17:30	Time at Leisure
17:30	Game Drive Starts
19:00	Dinner

Friday, 9 September 2022

B2 Gold Mine Visit

07:00- 08:00	Breakfast
08:00-10:00	Mine Tour
10:00-10:30	Refreshments
11:00-13:00	Crocodile Ranch
13:30-16:30	Drive back to Windhoek

Saturday, 10 September 2022: Windhoek Hotel and Casino Resort

10:00-12:00	Ministry of Mines and Energy Museum Tour
16:00-18:00	Early Registrations

Sunday 11 September 2022

NUST Windhoek Tour + Council Meeting

08:30-10:30	Windhoek Tour
10:30-11:30	NUST Tour
11:30 -14:30	Council Meeting
14:30-15:00	Coffee Break
15:00-17:00	Committee meetings
17:00-18:00	SOMP Registrations
18:00-20:00	Welcome Cocktail Function NUST Hotel School [Dress code: Smart casual]



APPENDIX 2:

Conference Programme

Monday, 12 September 2022 – Conference Day 1		
07:00–08:00	Tea/Coffee/SOMP Registrations	
Session Chair: Dr Anna Matros-Goreses <i>Executive Director, Research, Innovation and Partnerships Directorate</i>		
08:00–08:10	Welcome Address	Z. Botha, SAIMM President
08:10–08:20	Cultural Dances	
08:20–08:40	Official Welcome	Dr Eroid Naomab, NUST Vice-Chancellor
08:40-09:10	Overview Namibia mining	V. Malango, CEO Chamber of Mines Namibia
09:10–09:40	Industry Keynote	M. Dawe, Managing Director B2Gold Otjikoto Mine
09:40-10:10	Guest Keynote	N. Plint, Sustainable Minerals Institute Director, Australia
10:10-10:20	Remarks	Professor Harmony Musiyarira SOMP President 2021/2022
10:20-10:40	Coffee and Snacks Break	
10:40-12:10	Session 1: SOMP Business meeting	
Session Chair: Professor Vladislav Kecojevic, SOMP Secretary General		
12:10-12:30	Cultural Activity (Dance)	
12:30-13:00	Official Opening	Minister of Mines and Energy
13:00-14:00	Network Lunch	
14:00-16:00	Session 2: Education	
Session Chair: Associate Professor Rudrajit Mitra		
14:00-14:20	Keynote Presentation Importance of the capstone mine design and planning project in addressing graduate attributes for accreditation of mining engineering programmes in South Africa	C. Musingwini, The University of the Witwatersrand, South Africa
14:20-14:40	Teaching sustainability in artisanal and small-scale gold mining	J.I. Tobón and O.J. Restrepo-Baena, Universidad Nacional de Colombia, Colombia

14:40-15:00	Educating world class engineers for the development of Mongolia T. Hollenberg ¹ and F. Wullkopf ^{2, 1} , German-Mongolian and ² Institute for Resources and Technology GMIT Deutsche Gesellschaft für Internationale Zusammenarbeit, Germany	
15:00-15:20	I+MC: Development and Implementation of a modern Mine Closure Course	A. Hutwalker, A. Binder, and O. Langefeld, <i>Clausthal University of Technology, Germany</i>
15:20-15:40	Implementing the online teaching in universities during the COVID-19 pandemic: Experience and lessons from	China L. Liu, H. Li, Z. Sun, and Z. Jiang, <i>Chongqing University (CQU), China</i>
15:40-16:00	Introducing mining engineering to first-year students: The benefits of a digital uplift	G. Bournival and S. Ata, <i>University of New South Wales, Australia</i>
16:00-16:20	Coffee Break	
16:20-16:40	Potential contribution of mining universities to improve the social license to operate	C. Dauber, P. Goerke-Mallet, and A. Daniels, <i>TH Georg Agricola University, Germany</i>
16:40-17:00	Perception of climate change risk in Zambian mining industry: A case study	S. Mulenga and B. Besa, <i>University of Zambia, Zambia</i>
17:20-17:20	Optimizing the production schedule for transition mines	A. Anani ¹ , I. Ortiz ² , and H. Li ³ , ¹ University of Arizona, ² Pontificia Universidad and ³ Catolica de Chile <i>University of Missouri–St. Louis</i>
17:20-17:40	Multidisciplinary group project based courses in mining engineering programme	B. Li, C. Zhang, and S. Saydam, <i>The University of New South Wales, Australia</i>
17:40-17:50	Delegates photo	
17:50-18:30	Free time	
18:30	Buses leave for evening event Welcome - Cultural evening event Dress code: Casual, Africa theme	



Tuesday, 13 September 2022: Conference Day 2

07:00-08:00 Tea/Coffee/Hotel

08:00-10:45 Session 3: Education

Session Chair: Associate Professor Rudrajit Mitra

08:00-08:20	Underground mine safety: An integrated approach for the course and personnel development	A. Binder, A. Hutwalker, O. Langefeld, J. Bauermeister, M. Bothe-Fiekert, and S. Nowosad, <i>Clausthal University of Technology, Germany</i>
08:20-08:40	Future mining education using immersive visualization technologies	C. Zhang, S. Saydam, and I. Canbulat, <i>University of New South Wales, Australia</i>
08:40-09:00	Developing a framework for blended teaching and learning to enhance the performance of students	P. Twala, K. Chabedi and M. Nong, <i>University of the Witwatersrand, South Africa</i>
09:00-09:20	The flipped learning model experience in the resource estimation course - COVID-19 safe teaching option	H.L. Ramandi and J. Barber, <i>University of New South Wales, Australia</i>
09:20-09:40	Developing competitive and soft skills in mining engineering students: Mining games and mining competitions	C. Gómez and D. Javier, <i>University of Huelva, Spain</i>
09:40-10:20	Discussion: Curriculum Review	
09:40-10:00	Curriculum review – my experience	S. Raval, <i>University of New South Wales, Australia</i>
10:00-10:30	Panel Discussion	
10:30-10:45	Tim Shaw Award Presentation	George Barakos

10:45-11:00 Coffee and Snacks Break

11:00-13:00 Session 4: Members Development

Session Chairs: Associate Professors: Emily Sarver and Andrea Brickey

11:00-11:05	Welcome and Committee Introductions	
11:05-11:10	Supporting Women in Mining	
11:10-11:30	Panel Discussion	
11:30-12:10	World Cafe Format - Group Discussion	MDC Members

Emerging Trends in Curricula		
12:10-12:25	Alignment of tertiary curricula and the needs of the mine of the future: a case study of the world's top ten mining engineering schools	T. Tholana and P.N. Neingo
12:25-12:40	The expansion of mineral education in Southern Africa - an update	G. Dzinomwa, P. Shava, H. Musiyarira, and R.S. Suglo
12:40-13:10	World Cafe Format - Group Discussion	MDC Members
13:10-14:10	Lunch	
14:10-14:20	Three Key themes for the future of mining programmes	
14:20-14:40	Presentation on survey results	
14:40-15:10	Group Discussion - Status updates	
15:10-15:40	Group Discussion - Barriers and opportunities	
15:40-16:10	Summary of Discussions	MDC Members
16:10-16:25	Coffee Break	
16:25-17:15	Poster Session: 5-Minute presentation for authors to introduce poster	
Session Chair: Professor Godfrey Dzinomwa		
16:25-16:30	Influence of controllable factors affecting pre-split quality at Navachab Gold Mine	S.L. Iyambo, A.P. Shivute, and J.M. Akande, <i>University of Namibia, Namibia</i>
16:30-16:35	A comparison of discounted cash flow and Monte Carlo discounted cash flow valuation techniques on a gold mining Project	A.P. Shivute ₁ and T. Tholana ₂ , <i>University of Namibia, University of the Witwatersrand and Namibia, South Africa</i>
16:35–16:40	Compressive strength and controllable blasting parameters analysis for predicting muck-pile size and heave height	
16:40-16:45	Published grade-tonnage curves and why narrow-tabular gold mines do not achieve the expected average mining grades C. Birch University of the Witwatersrand, South Africa	A.P. Shivute ₁ and B. Adebayo ₂ , <i>University of Namibia and Federal University of Technology, Namibia</i>
16:45-16:50	Can blockchain technology be the answer to the problem of conflict minerals: Challenges and the road ahead	W. Pratt-Rogers and I. Kapoor, <i>University of Utah, USA</i>



16:50-16:55	The role of the pulp-froth/ water-air interface on particle detachment in froth flotation	C. Chipili and C. Bhondayi, <i>University of South Africa, South Africa</i>
16:55-17:00	Knisselwoods: Our Media lab	A. Binder, A. Hutwalker, and O. Langefeld, <i>Clausthal University of Technology, Germany</i>
17:00–17:05	Phytomining pollution at the Tsumeb smelter with the desert tamarisk tree,	Tamarix usneoides I.M. Weiersbye, I. Iiyambo, V. Kvandjima, A. Kanime, C. Sililo, and B.L. Dawson, <i>University of the Witwatersrand, Dundee Precious Metals and Tsumeb, Namibia</i>
17:10-17:20	Michael Karmis Award	
17:20-20:00	Leisure time	
20:00	Awards Dinner Dress code: Formal/traditional	

Wednesday, 14 September 2022 – Conference Day 3

07:30-08:00	Tea/Coffee/Hotel	
08:00-10:00	Session 6: Research and Development and Industry	
	Session Chair: Professor Serkan Saydam	
08:00-08:20	Update on our work on the publication practices	
08:20-08:40	Raw materials for the energy transition in view of the Russia-Ukraine war	W. Frenz, <i>Aachen University, Germany</i>
08:40-09:00	The role of the university in the regional raw materials strategy: The Asturias case	J.M.M Aguado and A.D. Díaz, <i>Universidad de Oviedo, Spain</i>
09:00-09:20	A generic central information environment framework for mining operations: A plausible alternative	N.S. Mageza, A.S. Nhleko, and P.J.K. Leeuw, <i>University of the Witwatersrand, South Africa</i>
09:20-09:40	Towards the development of an automated roof bolting machine for underground coal mines	S. Schafrik, P. Kolapo, and Z. Agioutantis, <i>University of Kentucky, USA</i>
09:40-10:00	The ultimate need for copper mining	L. Rattmann, <i>TH Georg Agricola University, Germany</i>
10:00-10:20	Coffee and Snacks Break	

10:20-10:30	Session Chair: Professor Zach Agioutantis	
10:20-10:30	Session 7: IT Committee	
10:20-10:30	Overview of the IT Committee	Z. Agioutantis, <i>University of Kentucky, USA</i>
10:30-11:50	Session 8: Capacity Building Committee	
	Session Chair: Professor Domingo Javier Carvajal Gomez	
10:30-11:30	Senior SOMP Members [Their Journey]	
11:30-11:50	Humanitarian Engineering Colombia - HE Colombia: an initiative to provide 'formation' to engineering students to serve historically underserved communities	O.J.R. Baena ₁ , J.C. Lucena ₂ , and J.F.P. Duarte _{3,1} , <i>Colorado School of Mines₂, Uniminuto Bogotá and ₃Universidad Nacional de Colombia, USA, Colombia</i>
11:50-12:10	Teaching and learning collaboration	M. Hitch, <i>Western Australia School of Mines; Minerals, Energy and Chemical Engineering, Faculty of Science and Engineering</i>
12:10-12:30	Future Regional Meetings	
12:30-13:30	Session 9: A Focus on Post Mining	
	Session Chair: Professor Benjamin Mapani, Namibia University of Science and Technology	
12:30-12:50	Monitoring of land surface movements in a seismically active post-mining area during mine closure - a case study	V. Sokoła-Szewioła ₁ and Z. Siejka ₂ , <i>Silesian University of Technology and ₂University of Agriculture in Krakow, Poland</i>
12:50-13:10	Post-mining for a better future: The development of the research center for post-mining at the TH Georg Agricola University	J. Kretschmann, P. Goerke-Mallet, C. Dauber, and M. Hegemann, <i>Georg Agricola University, Germany</i>
13:10-13:20	Session 10: Closing Ceremony (Cultural Activity)	
	Session Chair: Professor Harmony Musiyarira	
13:20-13:30	Handover of SOMP Flag	Outgoing President
13:30-13:50	New SOMP President Address	
	Conference Close	
13:50-14:30	Lunch	



Appendix 3:

Partners Programme

Monday, 12 September 2022: Day 1

08:30–09:00	Registration at Hotel Reception
09:00–09:30	Departure and Travel to N/aankuse Lodge
09:30-12:00	Carnivore Feeding and Tour
12:00-13:00	Lunch
15:00-18:30	Game Drive

Tuesday, 13 September 2022: Day 2

08:30-08:45	Registration at reception
08:45-09:00	Transfer to Penduka Women Project
09:00-09:15	Arrival and Check Attendees
09:15-10:45	Penduka women project
10:45-11:00	Transfer to NDTC
11:00 - 13:30	NDTC Tour
13:30-14:00	Lunch
14:00-14:15	Transfer to Craft Centre
14:15-15:00	Visit Craft Centre and Meteorite Fountain

Wednesday, 14 September 2022: Day 3

08:30-9:00	Registration at Reception
09:00-11:30	Walking City Tour through Windhoek Centre (ChristusErloser-Church, and Independence Memorial)

Appendix 4:

Post-Conference Tour

Saturday, 17 September 2022

13:30-14:00	Delegates Check
14:00-1800	Travel to Swakopmund
18:00-19:00	Arrival and Hotel Check-in
19:30-20:30	Dinner

Sunday, 18 September 2022

07:00-8:00	Breakfast
08:00-08:15	Delegates Check
08:15-09:00	Transfer to Husab Mine
09:00-13:00	Mine Tour
13:00-14:00	Lunch
14:00-17:00	Desert Adventure

Monday, 19 September 2022

07:00-8:00	Breakfast
08:00-08:15	Delegates Check
08:15-08:30	Transfer to Namibia Uranium Institute
09:00-13:00	Mine Tour
13:00-14:00	Lunch
14:00-17:00	Desert Adventure

Tuesday, 20 September 2022

07:00-8:00	Breakfast
08:00-08:15	Delegates Check
08:15-09:00	Transfer to Desalination Plant
09:00-12:00	Desalination Plant Tour
12:00-13:00	Lunch
13:00-17:00	Travel to Windhoek



08 September 2022

Dear Delegates

The Namibia University of Science and Technology (NUST) welcomes you to the Society of Mining Professors' 32nd Annual General Meeting and Conference. The local organizing team is committed to making your stay in Windhoek a memorable and enriching experience. Our NUST team is available to answer any questions that you might have and help you get what you need to enjoy your time in the city and country.

Please find the following information for easy reference:

Conference Concierge:

Mr Privilege Shava (081 671 2604, pshava@nust.na) and Ms Kemi Jegede (081 341 6788, kjegede@nust.na) are the assigned contact person to assist with any queries or issues that may arise during the conference period.

Connectivity:

It is effortless to purchase a sim card on arrival at the MTC Mobile Home for use during your stay in Namibia. There will be Wifi at your accommodation and the conference venue.

Health Services:

The closest private hospital is Lady Pohamba Private Hospital. Lady Pohamba has a pharmacy on-site and a 24-hour Emergency Centre – 0833911, in case of any medical emergency. If anything should happen, kindly keep the conference concierge informed.

Transport:

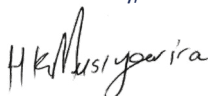
The host will provide for all official transport needs. Private transport needs are the responsibility of the guest. For Uber-like services, download LEFA or call Dial-a-Cab – 061 223531 or 0811270557. Both services are cash-only. For information on renting a car, kindly contact the conference concierge.

Any other business:

There are many retailers around, the closest mall being Grove Mall. Its' operating hours are generally 09:00 to 19:00 on weekdays and 09:00 to 17:00 on Sundays. There are also various eateries; kindly contact the conference concierge for recommendations.

The local organizing committee hopes that the information provided will assist you and would like to take this opportunity to wish you a pleasant stay in Namibia.

Yours sincerely,



Prof Harmony K. Musiyarira
President: Society of Mining Professors



NAMIBIA UNIVERSITY
OF SCIENCE AND TECHNOLOGY

Society of Mining Professors/Societät der
Bergbaukunde

**32nd SOMP Annual Meeting
and Conference Circular**

Faculty of Engineering and the Built Environment
Namibia University of Science and Technology
Private Bag 13388
Windhoek
NAMIBIA

T: + 264 61 207 2076

F: + 264 61 207 9076

E: fe@nust.na

www.nust.na